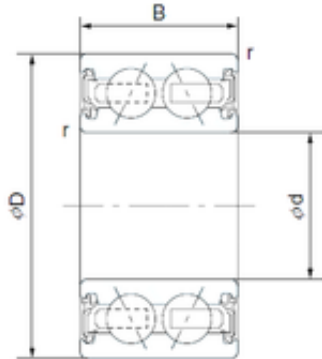




EDB BEARING CORP.



35 mm x 55 mm x 20 mm RSL18 3004 Full
Complement Cylindrical Roller Bearing (Without
Cup) 20x36.81x16mm

Bearing No. 35BD219

Size	35x55x20 mm
Bore Diameter	35 mm
Outer Diameter	55 mm
Width	20 mm
d	35 mm
D	55 mm
B	20 mm
C	20 mm

35BD219 Bearing 2D drawings and 3D CAD models